

**LISTEN**

**COMPOSE**

**PERFORM**

**The Elements of Music**

**Beat/Pulse**

The heartbeat



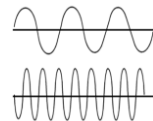
**Rhythm**

Pattern of sounds



**Pitch**

High or Low



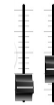
**Tempo**

Fast or Slow



**Dynamics**

Loud or Quiet



**Structure**

Order of sections

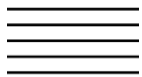


**Texture**

Number of layers



**Staff - 5 lines**



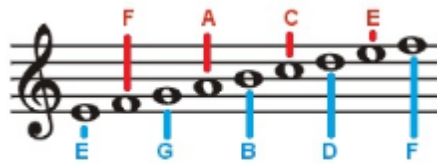
**Treble Clef - high notes**



**Bass Clef - low notes**



**Notes on the Staff**



**Melody**

the tune

Ascending      Descending

**Chord**

3 or more notes played at the same time

**Ostinato**

a short repeating pattern

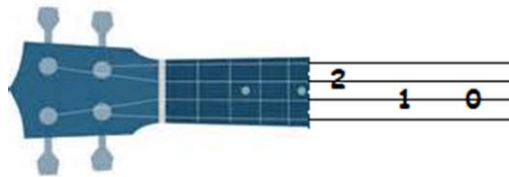
**Notes and Rests**

Note	Name	Rest on the Staff	Beats
	Semibreve		4
	Minim		2
	Crotchet		1
	Quaver		1/2
	Semiquaver		1/4

😊 Major 😊

☹️ Minor ☹️

**Reading TAB**



TAB is a type of graphic (numerical) notation. Think of it like a grid reference. The lines represent each string and the numbers tell you which fret to play on that string. '0' means an open string. Open string means you don't press on the fret.

